

**Luther Memorial Concert and Cultural Series
extends its appreciation to all donors and patrons
who make this free programming possible through
their generous donations and support!**

LMCCS Continued Support:

Robert and Diane Banks

John and Arlene Evans

Susan Forsythe

Jonathan and Molly Gaber

Linda Melaragno

Mary Mumford

Anonymous

Cathie Dugan

Les Fobes

Walt and Jeanne Gaber

Greg Kern

Otto and Catherine Meyn

Allan Slovenkay

**If you would like to be a benefactor or part of our programming committee,
please see Cantor Bryan**



Our mission is to have our children grow:

In wisdom (academically), in stature (physically), in favor with God (spiritually), in favor with others (socially) to ensure they become a positive asset to our community and to themselves.

Luther Memorial Academy offers a superior academic education where students are surrounded by a Christian atmosphere. We encourage a child's special interests and abilities and provide a courteous and respectful environment. We offer music, art, physical education, health, Spanish, and library classes.

Our school day begins at 8:15 a.m. and runs until 2:25 p.m. We offer a Before School Program that begins at 7:30 a.m. and an After School Program that ends at 5:30 p.m. Charges do apply.

We encourage you to call our office and set up a personal tour of our school. Shadow days are also welcome if you would like your child to get a feel for our typical school day and meet their future classmates! Call Luther Memorial Academy at **814.454.0106** and set up your tour today!

LUTHER MEMORIAL

225 West 10th Street • Erie, PA • 16501

CONCERT SERIES

www.lm-concerts.com

CULTURAL SERIES

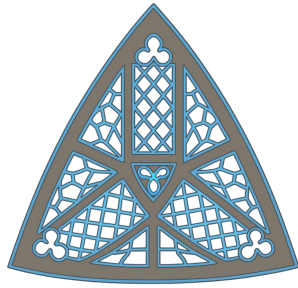


May 4, 2026

7:00 PM

Luther Memorial Church





Luther Memorial Concert and Cultural Series presents first-rate experiences to the Erie community through educational lectures, visual and performing arts. Established by Kevin Sadowski (1974-2003) and Charlotte Chaffee to create a non-profit organization as a way to support our community in enrichment and growth. This series has been continued by David Ruler (2003-2005), Erik Meyer (2005-2011), Walt Gaber (2012-2024), and Bryan Timm (2024-present).

“We believe art feeds the Spirit” is the organization’s credo, born from Martin Luther’s theology of music. We extend this credo to amplify all art and educational presentations.

What We Do

LMCCS makes memory experiences of the performing arts and lectures available to the Erie community. All events are free and open to the public and take place in the inspiring architectural setting of Luther Memorial Church. With a focus on uplifting and providing a performance venue for local talent, this series has also included such prestigious national performances such as Virgil Fox, The Concordia College Choir, Paul Manz, Mainstreet Brass, James Jordanare, and Somar Dance Works. The series has been in operation since 1980, and is funded through the generosity of season subscribers and free-will offerings.

“We believe art feeds the spirit”

The Concert/Cultural Series offers members and visitors to Luther Memorial Church a wealth of opportunities to gather in fellowship, experience moving and inspirational performances, and enrich our understanding of the world and community around us.

Support

The series is self-funded through the generosity of individuals, local businesses, free-will offerings, and regional arts grants. All donations to the Luther Memorial Concert Series / Luther Memorial Cultural Series are tax-deductible under 501 (c)3 status.



Dylan David Shaw, Organ

Wanamaker Grand Court
Philadelphia, PA



Final Concert of the 2025-2026 Season!

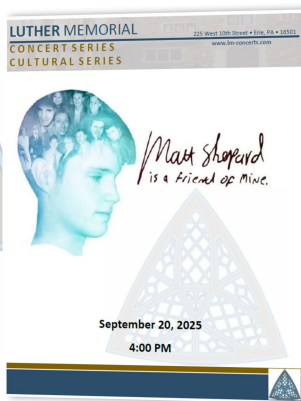
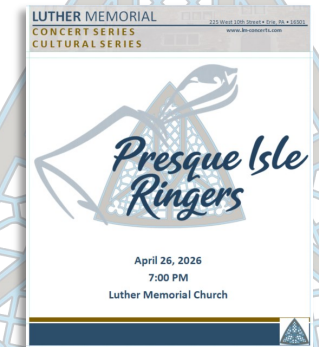
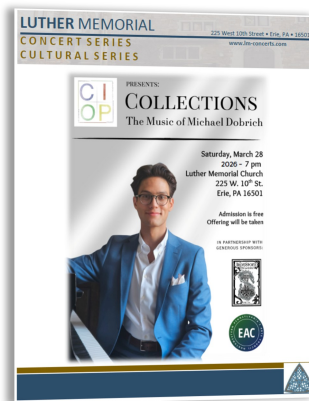
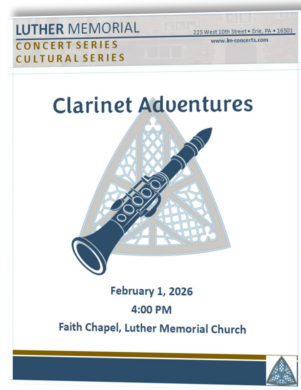
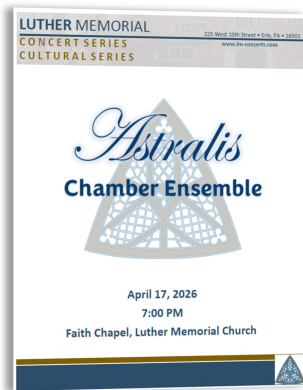
**Join us Memorial Day Weekend
Sunday, May 24, 2:30 PM**

Join us as we welcome Assistant Grand Court Organist, Dylan David Shaw, as we bring a taste of Wanamaker to Luther Memorial. Dylan is Parish Organist at Zion Lutheran Church in Bristol, PA and has served for nearly 11 years as Assistant Organist at the former Macy’s Philadelphia, Wanamaker Grand Court with Peter Richard Conte. In addition to his duties at the Grand Court, Dylan is an Associate Organist at Jim Whelan Boardwalk Hall in Atlantic City, New Jersey, home to the Largest Musical Instrument in the World.

LMCCS 2025-2026 Season

Dylan David Shaw—Memorial Day Weekend

Thank You to our donors and sponsors for a successful season!



Millcreek Area Community Band

May 4, 2026

Spring Concert

Star Spangled Banner

Francis Scott Key arr. John Stafford Smith

Allied Honor

Karl L. King arr. James Swearingen

The Pacific

Hans Zimmer & Black Neely arr. Ted Ricketts

Halcyon Hearts

Kataj Copley

Fairest of the Fair

Conductor:

John Philip Sousa arr. Larry Clark
JB Salter

On a Hymnsong of Philip Bliss

Conductor:

David Holsinger
Sam Signorino

The Light Eternal

James Swearingen

Joy Revisited

Frank Ticheli

The Armed Forces Salute

arr. Bob Lowden

West Side Story

Leonard Bernstein arr. Jay Bocook

America the Beautiful

Samuel Augustus Ward arr. Carmen Dragon

About the Artists:

Millcreek Area Community Band

From its roots as a clown/comic parade band, the Millcreek Area Community Band has grown into an ensemble of approximately 45 members that performs a wide variety of wind ensemble, concert band and symphonic band repertoire. The group performs at many functions and venues in the Greater Erie area. We operate with support from our audience members and the Millcreek Township Parks and Recreation Department. We are always looking for new members so please consider joining us at a rehearsal. We rehearse at McDowell Intermediate High School every Monday, 7-9 PM.



Director
Tess Jones

MAC Roster 2026

Flute

Joanne Holst
Becky Hull
Tess Jones
Martha Schrimper
Cheryl Trost

Bassoon

Sam Signorino

Clarinet

Melody Brown
Sharon Campbell
Laura Cook
Gary Flick
Karen Lewis
JB Salter
Christopher Wagler
Michelle Whalen

Alto Sax

Warren Hull
Dudley Brown
Bryce Wagner

Tenor Sax

Edna Stickell

Bari Sax

Fred Monahan

Trumpet

Dana Lewis
Richard Marshall
Chris Myers
Tom Whalen
Andrea Place

Horn

Linda Brown
Brian Gray

Trombone

Howard Getz
Devon Graves
Dorothy Patsy
David Trost
Steven Whalen

Euphonium

Bernie Myers
Jack Salter

Tuba

Jack Moulton

Percussion

Bob Shafer
Diane Stickell

