

**Luther Memorial Concert and Cultural Series
extends its appreciation to all donors and patrons
who make this free programming possible through
their generous donations and support!**

LMCCS Continued Support:

**Robert and Diane Banks
John and Arlene Evans
Susan Forsythe
Jonathan and Molly Gaber
Linda Melaragno
Mary Mumford
Anonymous**

**Cathie Dugan
Les Fobes
Walt and Jeanne Gaber
Greg Kern
Otto and Catherine Meyn
Allan Slovenkay**

**If you would like to be a benefactor or part of our programming committee,
please see Cantor Bryan**



Our mission is to have our children grow:

In wisdom (academically), in stature (physically), in favor with God (spiritually), in favor with others (socially) to ensure they become a positive asset to our community and to themselves.

Luther Memorial Academy offers a superior academic education where students are surrounded by a Christian atmosphere. We encourage a child's special interests and abilities and provide a courteous and respectful environment. We offer music, art, physical education, health, Spanish, and library classes.

Our school day begins at 8:15 a.m. and runs until 2:25 p.m. We offer a Before School Program that begins at 7:30 a.m. and an After School Program that ends at 5:30 p.m. Charges do apply.

We encourage you to call our office and set up a personal tour of our school. Shadow days are also welcome if you would like your child to get a feel for our typical school day and meet their future classmates! Call Luther Memorial Academy at **814.454.0106** and set up your tour today!

LUTHER MEMORIAL
CONCERT SERIES
CULTURAL SERIES

225 West 10th Street • Erie, PA • 16501

www.lm-concerts.com

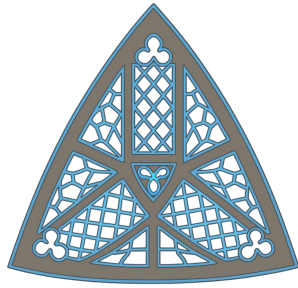


April 26, 2026

7:00 PM

Luther Memorial Church





Luther Memorial Concert and Cultural Series presents first-rate experiences to the Erie community through educational lectures, visual and performing arts. Established by Kevin Sadowski (1974-2003) and Charlotte Chaffee to create a non-profit organization as a way to support our community in enrichment and growth. This series has been continued by David Ruler (2003-2005), Erik Meyer (2005-2011), Walt Gaber (2012-2024), and Bryan Timm (2024-present).

“We believe art feeds the Spirit” is the organization’s credo, born from Martin Luther’s theology of music. We extend this credo to amplify all art and educational presentations.

What We Do

LMCCS makes memory experiences of the performing arts and lectures available to the Erie community. All events are free and open to the public and take place in the inspiring architectural setting of Luther Memorial Church. With a focus on uplifting and providing a performance venue for local talent, this series has also included such prestigious national performances such as Virgil Fox, The Concordia College Choir, Paul Manz, Mainstreet Brass, James Jordanare, and Somar Dance Works. The series has been in operation since 1980, and is funded through the generosity of season subscribers and free-will offerings.

“We believe art feeds the spirit”

The Concert/Cultural Series offers members and visitors to Luther Memorial Church a wealth of opportunities to gather in fellowship, experience moving and inspirational performances, and enrich our understanding of the world and community around us.

Support

The series is self-funded through the generosity of individuals, local businesses, free-will offerings, and regional arts grants. All donations to the Luther Memorial Concert Series / Luther Memorial Cultural Series are tax-deductible under

501 (c)3 status.



Monday, May 4, 7:00 PM

Millcreek Community Band

From its roots as a clown/comic parade band, the Millcreek Area Community Band has grown into an ensemble of approximately 45 members that performs a wide variety of wind ensemble, concert band and symphonic band repertoire. The group performs at many functions and venues in the Greater Erie area. We operate with support from our audience members and the Millcreek Township Parks and Recreation Department. We are always looking for new members so please consider joining us at a rehearsal. We rehearse at McDowell Intermediate High School every Monday, 7-9 PM.



Dylan David Shaw, Organ

Wanamaker Grand Court
Philadelphia, PA

Memorial Day Weekend 2026

TBA

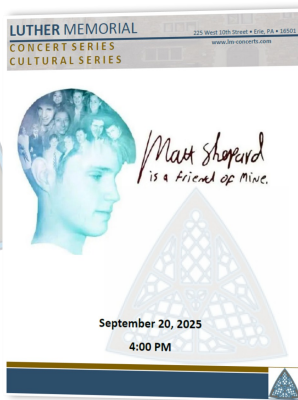
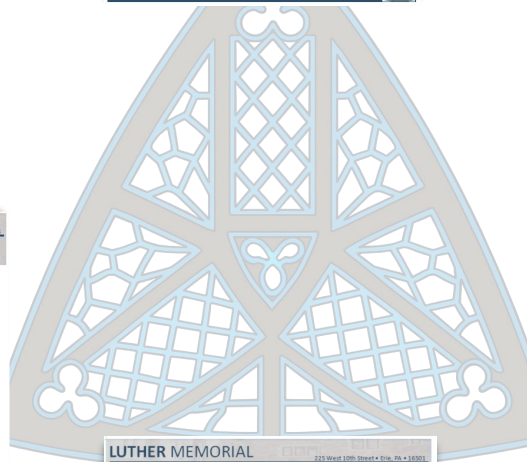
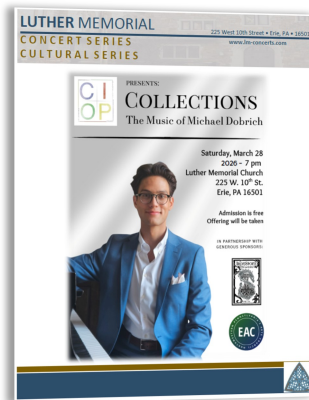
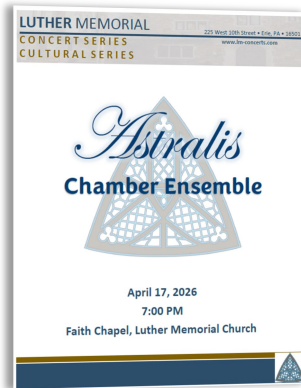
Join us as we welcome Assistant Grand Court Organist, Dylan David Shaw, as we bring a taste of Wanamaker to Luther Memorial. Dylan is Parish Organist at Zion Lutheran Church in Bristol, PA and has served for nearly 11 years as Assistant Organist at the former Macy’s Philadelphia, Wanamaker Grand Court with Peter Richard Conte. In addition to his duties at the Grand Court, Dylan is an Associate Organist at Jim Whelan Boardwalk Hall in Atlantic City, New Jersey, home to the Largest Musical Instrument in the World.

LMCCS 2025-2026 Season

Millcreek Community Band—May 4

Dylan David Shaw—Memorial Day Weekend

Thank You to our donors and sponsors for a successful season!



Presque Isle Ringers

Amy Fugate, Director

April 26, 2026

Let Love Ring



Exultation Matthew Compton

Prayer for the Innocents Michael Helman

Recuerdos arr. Kevin McChesney



How Can I Keep From Singing arr. Arnold Sherman

What the World Needs Now Is Love arr. Mitchell Eithun



Pizzicato Polka arr. Robert Growth



Let it Be/Hey Jude arr. Kevin McChesney
Rick Holdsworth & Thomas Brandt

This Little Light of Mine arr. Kurt Meyer



Please join us in the Parlor following the program for refreshments
and time to meet the artists.

About the Artists:



Amy Fugate / **Presque Isle Ringers**

Erie's only community handbell ensemble

Growing up in a family that was active in the music ministry at their church, Amy has been ringing handbells from a young age. Since graduating from Kenyon College with a degree

in music, Amy continued to be involved in music here in Erie. She is currently the handbell director at Church of the Cross. Recently, she has had the opportunity to work with several internationally recognized handbell clinicians while ringing at Distinctly Bronze, a handbell event for advanced ringers.

After many years of dreaming, in 2022, Amy Fugate, with the help of a few handbell ringing friends, created Presque Isle Ringers. The mission of this community ensemble is to foster public appreciation for the art of handbell ringing through both education and performance. Presque Isle Ringers is comprised of dedicated musicians from the greater Erie area. They gave their first performance in December of 2022. Since then, they have rung regularly in the lobby of the Warner Theater before the Erie Philharmonic Holiday Pops concerts. They have also rung a couple of other places around town in addition to regular winter and spring concerts at Church of the Cross. They are pleased to add the Luther Memorial Concert Series to this list. Presque Isle Ringers enjoys the opportunity to share a variety of musical genres and handbell techniques, not always heard in church.



Check us out
on Facebook
@ Presque Isle
Ringers



Help us grown
our ensemble and
share the joy of
handbells !



Presque Isle Ringers Ensemble

Erie's only community handbell ensemble

Kathy Elias	Deborah Morvay
Emma Evans	Amy Stenta
Amy Hatch	Cindy Sharrer
Brady Himes	Sue Tibbits
Matthew Jones	Dianne Tyler
	Michelle Whalen

Acknowledgments



Thank you for spending your afternoon with us! A free will offering will be received to help defray general operating costs for our ensemble. Baskets are at each entrance.

Thank you to Church of the Cross for the generous use of their facility and handbells. And to Westminster Presbyterian Church and First Presbyterian Church of North East for the use of their bells. We are fortunate to have friends like this who are willing to support us as we grow and ring more complicated music.

This is the end of our 4th season! We look with enthusiasm into the future as we spread our passion for the art of handbell ringing to the greater Erie area. Thank you to our donors who have graciously given to our ensemble. Please let us know if you would like to be part of our future. Inquiries and gifts are welcomed and appreciated.



Contact us at:
presqueisleringers@gmail.com
4356 Colt Lane, Erie, PA 16506

Mark your calendars for our Winter Concert: Sunday, December 13, 2026!